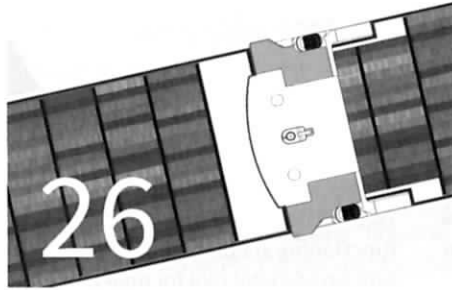
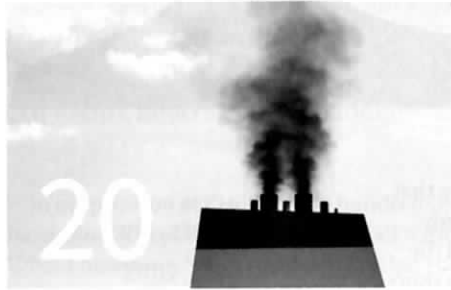


# Contents



For further in-depth coverage go to  
[Fairplay.IHS.com](http://Fairplay.IHS.com)  
Contact us by email at  
[safetyatsea@ihs.com](mailto:safetyatsea@ihs.com)



## Features

- P20 Low-sulphur fuels**  
Safety challenges for low-sulphur fuels
- P24 LNG training**  
Preparing crew for an LNG-fuelled future
- P26 ULCVs with no room for error**  
The dangers of restricted waterways
- P30 Grandfather clauses**  
The trouble with upgrade exemptions

## Regulars

- P4 Our say**  
Looking no further than the immediate cause of major disasters can overlook the culpability of shipping operators
- P5 Your say**  
Decades-old safety issues persist despite legislation to make working on board safer
- P6 News round-up**  
ECSA-ETF agreement on seafarers approved; Russia to upgrade its maritime navigation system; UAE wins IMO Council seat
- P12 Security news**  
Piracy and armed robbery declines but violence continues across Asia
- P14 Training news**  
Videotel has launched a training course to help enable safe LNG bunkering processes

- P16 Shared concerns**  
Seafarers reveal the reality of working conditions since MLC 2016
- P34 Security insight**  
EU 'under the radar' role to combat piracy
- P35 Regulation insight**  
Automation, cyber security, and shore-leave will be prominent in 2018 regulatory changes
- P36 Near misses**  
Power loss to bridge instruments; Smoke detectors test incident; Parted rope went rogue
- P38 MARS**  
Soot accumulation results in fire; Chain sling breaks and strikes stevedore
- P42 View astern**  
The evolution of shipping fuel

### On the cover

*Safety at Sea* discovers what risks low-sulphur fuel poses to onboard safety as shipping's 2020 global emissions cap looms. p20



Shutterstock/Getty Images: 5068130



**Professional Rescue Equipment for smaller vessels**

- Rescue Scoop:** Crane- or boom operated rescue net for recovering able or disabled persons
- Rescue Frame:** Manual recovery system for gentle, horizontal rescue of casualties
- Rescue Dummy:** Realistic rescue dummy of human proportions (1,8m tall, 85kg max weight)

**E-mail: [Rescue@dacon.no](mailto:Rescue@dacon.no) | [www.dacon.no](http://www.dacon.no)**